



Health and Social Services

Haldimand and Norfolk

Housing Information Guide

On Rent Geared-to-Income Assistance
and Special Needs Housing

519-426-6170 / 905-318-6623 / 519-582-3279

Ext. 3234 or ext. 3235

housing@hnhss.ca

www.hnhss.ca or www.hnhousing.org

Introduction

This information guide was created by Housing Services to answer basic questions about social housing, rent geared-to-income (RGI) assistance and special needs housing. It is information to help members of the public who are looking for affordable housing in the counties of Haldimand and Norfolk and act as a resource to community agencies assisting RGI applicants. This guide is also meant to provide a general overview of the local and provincial RGI rules, eligibility criteria for RGI applicants, and act as a catalogue of local social housing communities.

Norfolk County is the Service Manager for Haldimand and Norfolk Counties. Housing Services is a part of the Social Services & Housing Department, and is responsible for the administration and funding of the eleven (11) social housing providers located in Haldimand and Norfolk. Housing Services also manages the Centralized Waitlist for all applications to RGI housing within Haldimand and Norfolk Counties. The eleven housing providers are:

1. Haldimand Norfolk Housing Corporation – this is the local housing corporation, in which Haldimand County is 40% shareholder and Norfolk County is 60% shareholder; these buildings are 100% rent-geared-to-income
2. Dunnville Non-Profit Housing Corporation*
3. Kent park Community Homes Inc. *
4. Long Point Area Non-Profit Housing Corporation*
5. South & Metcalfe Non-Profit Housing Corporation*
6. St. Paul's Presbyterian Non-Profit Housing Corporation*
7. Brantwood Villa Non-Profit Housing Corporation*
8. Simcoe Community Homes Inc. *
9. Kin-Villa Corporation*
10. Del-Gold Villa*
11. Parkview Meadows Christina Retirement Village*

*These non-profit housing providers offer a combination of rent-geared-to-income housing and market rental units.

This information guide is available at various County offices and through participating Housing Providers that operate social housing within Haldimand and Norfolk counties. This guide can also be accessed at www.hnhousing.org and during normal business hours (Monday to Friday, 8:30am to 4:30pm) at the following locations:

Health and Social Services Department

- 12 Gilbertson Drive, Simcoe
- 282 Argyle Street South, Caledonia
- 117 Forest Street East, Dunnville

Norfolk County

- 50 Colborne Street South, Simcoe

Haldimand County

- 45 Munsee Street North, Cayuga

At the offices of each Housing Provider.

For more information on RGI assistance and special needs housing, refer to www.hnhousing.org or the [Housing Services Act](#); or contact the Housing Resource Coordinator at 519-426-6170, or 905-318-6623, ext. 3234 or ext. 3235.

What is rent-geared-to-income housing?

Rent geared to income (RGI) assistance is a type of financial assistance for eligible households to reduce the amount of rent for that household to live in a social housing community.

RGI assistance is based on 30% of a household's gross monthly income, or if the household is receiving assistance from Ontario Works or the Ontario Disability Support Program, a social assistance rent scale is applied. Additional charges may apply depending on the community location, i.e. utilities, parking, laundry, etc.

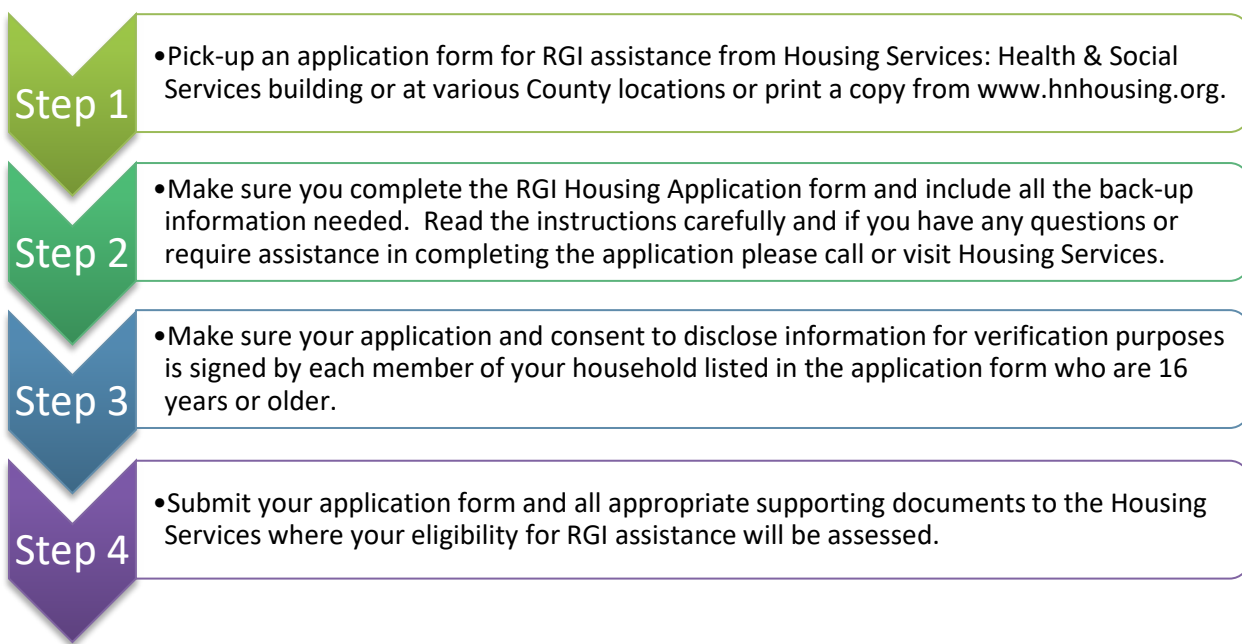
How to apply:

All social housing providers in Haldimand and Norfolk Counties are mandated to select their tenants for rent geared-to-income (RGI) units from a Centralized Waitlist (CWL).

Households are required to complete the RGI Housing application form and provide a range of information that enables the Housing Services team to determine each household's eligibility, in accordance with the provincial requirements of the *Housing Services Act* and its related Regulations.

Applications are available online or at various county offices, housing providers and other community agencies.

Application Process:



Eligibility:

For a household to qualify for RGI assistance, the application form is reviewed to make sure that they meet all of the following provincial requirements as prescribed by the *Housing Services Act, 2011* and Ont. Reg. 376/11:

- At least one member of the household must be 16 years of age or older and able to live independently (Proof of Age must accompany the application)
- All household members must be a Canadian Citizen, Landed Immigrant, or Refugee Claimant or have been granted Refugee status, with no outstanding removal, deportation or departure order enforceable under the Immigration and Refugee Protection Act Canada or have completed an application for permanent residency (Proof of Residency Status must accompany the application)
- No member has been convicted of misrepresentation of income in relation to RGI assistance under the Criminal Code, by a Court of Law or the Landlord & Tenant Board, within the past two years
- Any member of the household named in this application that owns residential property suitable for year-round occupancy must agree to sell it within 6 months of being housed.
- No current member of the household has outstanding Social Housing rental arrears in the Province of Ontario, or must be actively adhering to an approved repayment plan
- Depending on family composition, a household must occupy a unit, which they are eligible for under local occupancy standards
- Household members have pursued required sources of income

- Changes in household income or composition must be reported within 30 business days.
- Household Income must be within the established limit by type of unit as follows (subject to yearly revisions):

Type of Unit	Household Income Limit
Bachelor	\$24,500
1 Bedroom	\$31,000
2 Bedroom	\$38,000
3 Bedroom	\$43,500
4 Bedroom	\$54,000

**These amounts are subject to change on an annual basis.*

***Effective date: April 2018*

Special Priority Policy Status:

Special Priority (SPP) status is intended to assist victims of family violence and human trafficking to separate permanently from their abuser. SPP status allows applicants to move ahead of other applicants on the Central Waiting List.

For the purpose of Special Priority, abuse means: One or more incidents of: physical or sexual violence, controlling behavior, or intentional destruction of or intentional injury to property, or words, actions or gestures that threaten an individual or lead an individual to fear for his or her safety, or trafficking of the member done by any individual.

For the purpose of Special Priority, the abuser must be one of the following:

- An individual who is related to the member or any other member of the household;
- An individual who is or has been in an intimate partner relationship with the member or any other member of the household;
- An individual on whom the member or any other member of the household is emotionally, physically or financially dependent;
- An individual who is emotionally, physically or financially dependent on the member or any other member of the household; or
- An individual sponsoring the member or any other member of the household as an immigrant.

There is an additional part to the RGI Housing Application form called: Request for Special Priority Form that needs to be completed together with the main application form to be reviewed for SPP eligibility.

Supportive Housing

If you are looking for Supportive Housing where special support services are provided, you must complete a supplementary application for the specific supportive housing provider. In order to qualify for supportive housing, you must require the support services connected with the housing, in order to live independently. Services generally vary from provider to provider.

Below is a list of Supportive Housing Providers in Norfolk and Haldimand Counties; they are **not** subject to the *Housing Services Act, 2011*:

True Experience

- Affordable, supportive housing for adults with chronic mental illness
- Located in Dunnville

Canadian Mental Health Association

- Affordable housing and case management support for adults with a diagnosis of a serious and persistent mental illness.
- Located in Simcoe

Union House

- Supportive housing for youth aged 16-17 with a focus on education and life skills
- Located in Simcoe

Social Housing Location & Profiles

The service area combines the geographic areas of Haldimand and Norfolk Counties. The Centralized Waitlist consists of individual waiting lists for each housing location across the entire service area. Applicants can apply to as many housing locations (for which they are eligible) as they wish, throughout the service area.

Below are the individual housing locations throughout the local service area. Click on the address/location to see the community profile.

Haldimand County

Caledonia

- [68 Selkirk Street](#)

Cayuga

- [1 Robert Dell Court](#)

Dunnville

- [550 George Street](#)
- [Elizabeth Crescent](#)
- [503 Main Street East](#)
- [400 Queen Street East](#)
- [440 Queen Street East](#)
- [Queen/Main Streets](#)

Hagersville

- [109 King Street East](#)

Townsend

- [76 Town Centre Drive](#)

Norfolk County

Delhi

- [Banstead/Gibraltar](#)
- [243 Western Avenue](#)
- [54 William Street](#)
- [283 William Street](#)

Port Dover

- [219 Regent Avenue](#)

Port Rowan

- [38 Erie Avenue](#)

Simcoe

- [91 Oak Street](#)
- [20 Scot Avenue](#)
- [11 Arthur Street](#)
- [Oakwood Avenue/Ashton Drive](#)
- [85 Argyle Street](#)
- [39- 75 \(odd\), 70 to 76 \(even\), 78 to 92 \(even\) Austin Crescent](#)
- [368 Queen Street North](#)
- [100 Robinson Street](#)
- [265 Metcalfe Street South](#)
- [141 Windham Street](#)

Waterford

- [39 Nichol Street](#)

Building / Community Profile

Name of Corporation

Haldimand Norfolk Housing Corporation

Address

68 Selkirk Street, Caledonia, Ontario

Number of Units

20 (1 bedroom) RGI apartments

Community Type

Seniors and Adults (16+)

- No market units
- No modified units

Site Features

- Tenant parking
- Coin operated laundry facilities
- Patio/Balcony
- Security entrance
- Elevator
- Includes fridge and stove
- Cable TV (not included in rent)

Community Features Nearby

- Doctor
- Dentist
- Shopping
- Library
- Church
- Restaurants
- Recreational facilities
- Schools

Features Included in Rent

- Hydro/water
- Heat
- Parking
- Hot water heater



Building / Community Profile

Name of Corporation

Brantwood Villa Non-Profit Housing Corporation

Address

1 Robert Dell Court, Cayuga

Number of Units

Total: 40 (30 – 1 b/r; 10 – 2 b/r) apartments

Community Type

Seniors (65+)

- 27 – rent geared to income units
- 13 – market rent units available (1 and 2 bedroom)
- 1 – 1 bedroom, 1 – 2 bedroom modified units

Site Features

- Tenant and visitor parking
- Coin operated laundry facilities
- Meeting room
- Lounge
- Patio/Balcony
- Security entrance
- Wheelchair accessible
- Includes fridge and stove
- Elevator

Community Features Nearby

- Doctor
- Dentist
- Shopping
- Library
- Church
- Restaurants
- Recreational facilities
- Schools

Features Included in Rent

- Hydro/water
- Heat/electric
- Parking



Building / Community Profile

Name of Corporation

Dunnville Non-Profit Housing Corp

Address

550 George Street, Dunnville

Thompson Creek Court**Number of Units**

60 (21–2 b/r; 36–3 b/r) Townhouses

Community Type

Families

- 3 – 2 bedroom modified units

Site Features

- Includes fridge and stove
- Laundry hook-up
-

Community Features Nearby

- Doctor
- Dentist
- Schools
- Shopping
- Library
- Church
- Restaurants
- Recreational facilities
- Hospital

Features Included in Rent

- Parking & visitors parking
(most units include
driveway)
- Hot water heater



Building / Community Profile

Name of Corporation

Haldimand Norfolk Housing Corporation

Address

Elizabeth Crescent, Dunnville, Ontario

Number of Units

25 (3 bedroom) RGI

Community Type

Single Family Homes for Families

- No market units

Site Features

- Driveways
- Laundry hook-up
- Fenced in backyards
- Tenant pays heat/hydro/water & sewer
- Front Porches
- Street parking available

Community Features Nearby

- Doctor
- Dentist
- Schools
- Shopping
- Library
- Church
- Restaurants
- Recreational facilities
- Hospital

Features Included in Rent

- Hot water heater



Building / Community Profile

Name of Corporation

Haldimand Norfolk Housing Corporation

Address

503 Main Street, Dunnville, ON

Number of Units

44 (1 bedroom) RGI apartments

Community Type

Seniors (60+)

- No market units
- 1 – 1 bedroom modified unit

Site Features

- Tenant parking
- Coin operated laundry facilities
- Patio/Balcony
- Security entrance
- Elevator
- Includes fridge and stove
- Cable TV (not included in rent)

Community Features Nearby

- Doctor
- Dentist
- Schools
- Shopping
- Library
- Church
- Restaurants
- Recreational facilities
- Hospital

Features Included in Rent

- Hydro/water
- Heat & Parking



Building / Community Profile

Name of Corporation

Haldimand Norfolk Housing Corporation

Address

400 Queen Street East, Dunnville

Number of Units

23 (1 bedroom) RGI apartments

Community Type

Seniors and Adults (16+)

- No market units
- No modified units

Site Features

- Limited Tenant parking
- Coin operated laundry facilities
- Patio/Balcony
- Security entrance
- Includes fridge and stove
- Cable TV (not included in rent)

Community Features Nearby

- Doctor
- Dentist
- Shopping
- Library
- Church
- Restaurants
- Recreational facilities
- Hospital

Features Included in Rent

- Hydro/water
- Heat
- Parking
- Hot water heater



Building / Community Profile

Name of Corporation

Haldimand Norfolk Housing Corporation

Address

440 Queen Street East, Dunnville

Number of Units

11 (3–bachelor; 8–1 b/r) RGI apartments

Building Type

Seniors and Adults (16+)

- No market units
- No modified units

Site Features

- Limited Tenant parking
- Coin operated laundry facilities
- Security entrance
- Includes fridge and stove
- Cable TV (not included in rent)

Community Features Nearby

- Doctor
- Dentist
- Schools
- Shopping
- Library
- Church
- Restaurants
- Recreational facilities
- Hospital

Features Included in Rent

- Hydro/water (subject to amendment)
- Heat
- Parking
- Hot water heater



Building / Community Profile

Name of Corporation

Haldimand Norfolk Housing Corporation

Address

Queen & Main Street, Dunnville

Number of Units

16 (6 – 2 b/r; 8 – 3 b/r; 2 – 4 b/r) RGI

Community Type

Semi Detached Houses for Families

- No market units
- No modified units

Site Features

- Driveways with space for visitor parking
- Tenant pays heat/hydro, water & sewer
- Fenced in back yards
- Laundry hook-up

Community Features Nearby

- Doctor
- Dentist
- Schools
- Shopping
- Library
- Church
- Restaurants
- Recreational facilities
- Hospital

Features Included in Rent

- Parking
- Hot water heater



Building / Community Profile

Name of Corporation

Haldimand Norfolk Housing Corporation

Address

109 King Street, East, Hagersville

Number of Units

15 (1 bedroom) RGI apartments

Community Type

Seniors and Adults (16+)

- No market units
- No modified units

Site Features

- Limited Tenant parking
- Coin operated laundry facilities
- Patio/Balcony
- Security entrance
- Includes fridge and stove
- Cable TV (not included in rent)

Community Features Nearby

- Doctor
- Dentist
- Shopping
- Library
- Church
- Restaurants
- Recreational facilities
- Hospital

Features Included in Rent

- Hydro/water
- Heat
- Parking
- Hot water heater



Building / Community Profile

Name of Corporation

Parkview Meadows Retirement Village

Address

76 Town Centre Drive, Townsend,

Number of Units

30 (11 – 1 b/r; 19 – 2 b/r) RGI apartments

Community Type

Seniors

- Market units available
- 1 – 1 bedroom modified unit

Site Features

- Tenant and visitor parking
- Coin operated laundry facilities
- Lounge
- Meeting room
- Patio/Balcony
- Security entrance
- Includes fridge and stove
- Long-term care facility on site
- Cable TV (not included in rent)

Community Features Nearby

- Church

Features Included in Rent

- Hydro/water
- Heat
- Parking
- Hot water heater



Building / Community Profile

Name of Corporation

Haldimand Norfolk Housing Corporation

Address

Banstead and Gibraltar Streets, Delhi,

Number of Units

22 (18 – 3 b/r; 4 – 4 b/r) RGI

Community Type

Semi - & detached houses for Families

- No market units
- 1 – 3 bedroom modified unit

Site Features

- Fenced in backyards
- Driveway
- Laundry hook up
- Tenant pays heat/hydro, water & sewer
- Parking is available on the street

Community Features Nearby

- Doctor
- Dentist
- Shopping
- Library
- Church
- Restaurants
- Recreational facilities
- Park

Features Included in Rent

- Laundry hook up
- Parking
- Hot water heater



Building / Community Profile

Name of Corporation

Haldimand Norfolk Housing Corporation

Address

243 Western Avenue, Delhi, ON

Number of Units

26 (1 bedroom) RGI apartments

Community Type

Seniors and Adults (16+)

- No market units
- No modified units

Site Features

- Tenant parking
- Coin operated laundry facilities
- Patio/Balcony
- Security entrance
- Elevator
- Cable (not included in rent)

Community Features Nearby

- Doctor
- Dentist
- Shopping
- Library
- Church
- Restaurants
- Recreational facilities

Features Included in Rent

- Hydro/water
- Heat
- Parking
- Hot water heater



Building / Community Profile

Name of Corporation

Haldimand Norfolk Housing Corporation

Address

54 William Street, Delhi, Ontario

Number of Units

15 (1 bedroom) RGI apartments

Community Type

Seniors and Adults (16+)

- No market units
- No modified units 503 4004

Site Features

- Limited Tenant parking
- Coin operated laundry facilities
- Security Entrance
- Includes fridge and stove
- Cable (not included in rent)

Community Features Nearby

- Doctor
- Dentist
- Shopping
- Library
- Church
- Restaurants
- Recreational facilities

Features Included in Rent

- Hydro/water
- Heat
- Parking
- Hot water heater



Building / Community Profile

Name of Corporation

Del Gold Villa

Address

283 William Street, Delhi, Ontario

Number of Units

25 (19 - 1 b/r; 6 – 2 b/r) RGI apartments

Community Type

Seniors (60+)

- Market units available (1 & 2 bedroom)
- 2 – 1 bedroom modified units

Site Features

- Limited Tenant parking
- Coin operated laundry facilities
- Library room
- Patio/Balcony
- Security Entrance
- Elevator
- Cable TV (not included in rent)

Community Features Nearby

- Doctor
- Dentist
- Shopping
- Library
- Church
- Restaurants
- Recreational facilities

Features Included in Rent

- Hydro/water
- Heat
- Parking
- Hot water heater



Building / Community Profile

Name of Corporation

Haldimand Norfolk Housing Corporation

Address

219 Regent Avenue, Port Dover,

Number of Units

30 (1 bedroom) RGI apartments

Community Type

Seniors and Adults (16+)

- No market units
- No modified units

Site Features

- Tenant parking
- Coin operated laundry facilities
- Patio/Balcony
- Security entrance
- Elevator
- Includes fridge and stove
- Cable TV (not included in rent)

Community Features Nearby

- Doctor
- Dentist
- Shopping
- Library
- Church
- Restaurants
- Schools
- Recreational facilities

Features Included in Rent

- Hydro/water
- Heat
- Parking
- Hot water heater



Building / Community Profile

Name of Corporation

Long Point Area Non-Profit Housing Corp.

Address

38 Erie Avenue, Port Rowan, Ontario

Erie Park Place**Number of Units**

28 (24 – 1 b/r, 4 – 2 b/r) apartments

Community Type

Snrs (60+) (Bldg 40) & Adults (16+) (Bldg 42)

- Market units available (4 – 2 bedroom, 1 – 1 bedroom)
- 1 – 1 bedroom modified unit, 1- 2 b/r modified unit

Site Features

- Tenant and visitor parking
- Coin operated laundry facilities
- Patio/Balcony
- Security entrance
- Includes fridge and stove
- Cable TV (not included in rent)

Community Features Nearby

- Doctor
- Dentist
- Shopping
- Library
- Church
- Restaurants
- Schools
- Recreational facilities

Features Included in Rent

- Hydro/water/heat
- Parking
- Hot water heater



Building / Community Profile

Name of Corporation

Long Point Area Non-Profit Housing Corp.

Address

38 Erie Avenue, Port Rowan, Ontario

Erie Park Place**Number of Units**

12 (4 – 2 b/r, 2 – 3 b/r, 6 – 4 b/r) RGI

Community Type

Townhouses for Families

- No market units
- No modified units

Site Features

- Tenant and visitor parking
- Laundry hook-up
- Includes fridge and stove
- Tenants pay heat, hydro, water and sewer
- Cable TV (not included in rent)

Community Features Nearby

- Doctor
- Dentist
- Shopping
- Library
- Church
- Restaurants
- Schools
- Recreational facilities

Features Included in Rent

- Parking
- Hot water heater



Building / Community Profile

Name of Corporation

Haldimand Norfolk Housing Corporation

Address

91 Oak Street, Simcoe, Ontario

Number of Units

22 (1 bedroom) RGI apartments

Community Type

Seniors (59 and over)

- No market units
- 2 – 1 bedroom modified units

Site Features

- Limited Tenant and visitor parking
- Coin operated laundry facilities
- Patio/Balcony
- Security entrance
- Includes fridge and stove
- Cable TV (not included in rent)

Community Features Nearby

- Doctor
- Dentist
- Shopping
- Library
- Church
- Restaurants
- Recreational facilities
- Hospital

Features Included in Rent

- Hydro/water
- Heat
- Parking
- Hot water heater



Building / Community Profile

Name of Corporation

Haldimand Norfolk Housing Corporation

Address

20 Scott Avenue, Simcoe, Ontario

Number of Units

32 (1 bedroom) RGI apartments

Community Type

Seniors (59 and over)

- No market units
- No modified units

Site Features

- Tenant and visitor parking
- Coin operated laundry facilities
- Patio/Balcony
- Security entrance
- Includes fridge and stove
- Cable TV (not included in rent)

Community Features Nearby

- Doctor
- Dentist
- Shopping
- Library
- Church
- Restaurants
- Recreational facilities
- Hospital

Features Included in Rent

- Hydro/water
- Heat
- Parking
- Hot water heater



Building / Community Profile

Name of Corporation

Haldimand Norfolk Housing Corporation

Address

11 Arthur Street, Simcoe, Ontario

Number of Units

28 (16 – bachelor; 12 – 1 b/r) RGI apartments

Community Type

Seniors (60 +)

- No market units
- No modified units

Site Features

- Limited Tenant and visitor parking
- Coin operated laundry facilities
- Meeting room
- Security entrance
- Elevator
- Includes fridge and stove
- Cable TV (not included in rent)

Community Features Nearby

- Doctor
- Dentist
- Shopping
- Library
- Church
- Restaurants
- Recreational facilities
- Schools
- Parks
- Hospital

Features Included in Rent

- Hydro/water
- Heat
- Parking
- Hot water heater



Building / Community Profile

Name of Corporation

Haldimand Norfolk Housing Corporation

Address

Oakwood Ave. /Ashton Drive, Simcoe,

Number of Units

36 (8 – 2 b/r; 18 – 3 b/r; 6 – 4 b/r; 4 – 5 b/r)

Community Type

Semi-detached houses for Families

- No market units
- No modified units

Site Features

- Tenant and visitor parking
- Laundry hook-up

Community Features Nearby

- Doctor
- Dentist
- Shopping
- Schools
- Library
- Church
- Restaurants
- Recreational facilities
- Hospital

Features Included in Rent

- Parking
- Hot water heater



Building / Community Profile

Name of Corporation

Simcoe Community Homes ,

Address

85 Argyle Street, Simcoe, Ontario

Lynn View Terrace**Number of Units**

56 (41 – 1 b/r; 15 – 2 b/r) RGI apartments

Community Type

Seniors (65+)

- Market units available
- No modified units

Site Features

- Tenant and visitor parking
- Coin operated laundry facilities
- Elevator
- Ground floor patios
- Security entrance
- Includes fridge and stove
- Cable TV (not included in rent)

Community Features Nearby

- Doctor
- Dentist
- Shopping
- Library
- Church
- Restaurants
- Recreational facilities
- Hospital

Features Included in Rent

- Hydro/water
- Heat/electric
- Parking
- Hot water heater

***See page 39 for apartment unit pictures**



Building / Community Profile

Name of Corporation

Simcoe Community Homes

Address

39 to 75 (odd), 70 to 76 (even), 78 to 92 (even) Austin Crescent, Simcoe, Ontario

Victoria Place**Number of Units**

31 (3 bedroom) RGI

Community Type

Semi-detached (22), Townhouses (8) and Single Family Houses (1) for Families

- Market Units available
- 3 – 3 bedroom modified units

Site Features

- Tenant and visitor parking
- Laundry hook-up
- Fenced in or Privacy fenced back yards
- Patio
- Playground
- Includes fridge and stove
- Cable TV (not included in rent)

Community Features Nearby

- Doctor
- Dentist
- Schools
- Shopping
- Library
- Church
- Restaurants
- Recreational facilities
- Hospital

Features Included in Rent

- Parking
- Laundry hook-up



Building / Community Profile

Name of Corporation

Kent Park Community Homes (Simcoe) Inc.

Address

368 Queen Street North, Simcoe,

Maranatha Gardens**Number of Units**

30 (28 – 3 b/r; 2 – 4 b/r) RGI townhouses

Community Type

Families

- Market units available
- No modified units

Site Features

- Tenant and visitor parking
- Laundry hook-up
- Meeting room
- Patio
- Playground
- Includes fridge and stove
- Cable TV (not included in rent)

Community Features Nearby

- Doctor
- Dentist
- Shopping
- Library
- Church
- Schools
- Parks
- Restaurants
- Recreational facilities
- Hospital

Features Included in Rent

- Parking



Building / Community Profile

Name of Corporation

Kent Park Community Homes (Simcoe) Inc.

Address

368 Queen Street North, Simcoe

Maranatha Gardens**Number of Units**

40 (8 – 1 b/r; 32 – 2 b/r) RGI apartments

Community Type

Adults (16+) and Seniors

- Market units available
- 2 – 2 bedroom modified units

Site Features

- Tenant and visitor parking
- Coin operated laundry facilities
- Meeting room
- Patio/balcony
- Security
- Elevator
- Includes fridge and stove
- Wheelchair accessible
- Designated parking (cut curbs)
- Cable TV (not included in rent)

Community Features Nearby

- Doctor
- Dentist
- Shopping
- Schools
- Library
- Church
- Restaurants
- Recreational facilities
- Parks

Features Included in Rent

- Parking
- Hot water heater
- Water
- Heat (gas)

***See page 38 for apartment unit pictures**



Building / Community Profile

Name of Corporation

St. Paul's Presbyterian Church (Simcoe) Non-Profit Housing Corporation

Address

St. Paul's Court, 100 Robinson Street, Simcoe, Ontario

Number of Units

30 (28 – 1 b/r; 2 – 2 b/r) RGI apartments

Community Type

Seniors (65+)

- Market units available
- 1 – 1 bedroom modified unit

Site Features

- Limited tenant parking
- Coin operated laundry facilities
- Meeting room and lounge
- Patio/Balcony or extended living space units
- Security entrance
- Elevator
- Wheelchair accessible
- Includes fridge and stove
- Cable TV (not included in rent)

Community Features Nearby

- Doctor
- Dentist
- Shopping
- Library
- Church
- Restaurants
- Recreational facilities
- Hospital

Features Included in Rent

- Hydro/water
- Heat/electric
- Parking
- Hot water heater

***See page 37 for apartment unit pictures**



Building / Community Profile

Name of Corporation

South & Metcalfe Non-Profit Housing Corporation

Address:

265 Metcalfe St South, Simcoe

Number of Units

12 (1 – 1 bedroom; 4 – 2 bedroom; 7 – 3 bedroom) RGI apartments for **Families**

- No market units
- No modified units

Site Features

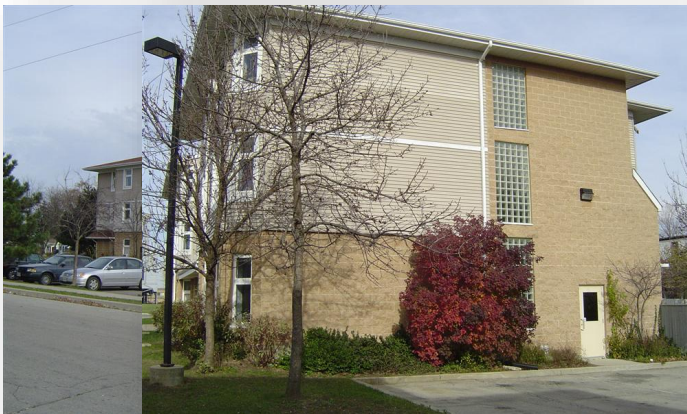
- Tenant and visitor parking
- Coin operated laundry facilities
- Tenant pays hydro & gas
- Security entrance
- Includes fridge and stove

Community Features Nearby

- Doctor
- Dentist
- Shopping
- Library
- Church
- Restaurants
- Recreational facilities
- Hospital

Features Included in Rent

- Parking
- Water & sewer
- Hot water heater



Building / Community Profile

Name of Corporation

South & Metcalfe Non-Profit Housing Corporation

Address

269 Metcalfe St. South, Simcoe

Quetzal Family Homes *Second Stage Housing – housing is offered for a period up to one (1) year

Number of Units

16 (1 – 1 bedroom; 6 – 2 bedroom; 9 – 3 bedroom) apartments for Women and Children who have survived or experienced abuse

- No market units
- 1 – 2 bedroom modified unit

Site Features

- Tenant and visitor parking
- Laundry facilities
- Meeting room
- Playground
- Security entrance
- Includes fridge and stove
- Development workshops
- Counseling
- Pre-school program for children

Community Features Nearby

- Doctor
- Dentist
- Schools
- Shopping
- Library
- Church
- Restaurants
- Recreational facilities
- Hospital



Features Included in Rent

- Water / sewer
- Parking
- Hot water heater
- Heat / hydro



Building / Community Profile

Name of Corporation

Kin-Villa Corporation

Address

141 Windham Street, Simcoe, Ontario

Kin-Villa**Number of Units**

25 (7 – 2 b/r; 18 – 3 b/r) RGI townhouses

Community Type

Families

- Market units available
- 3 – 3 bedroom modified units

Site Features

- Tenant and visitor parking
- Patio
- Playground
- Includes fridge and stove
- Cable TV (not included in rent)

Community Features Nearby

- Doctor
- Dentist
- Schools
- Parks
- Shopping
- Library
- Church
- Restaurants
- Recreational facilities
- Hospital

Features Included in Rent

- Hydro/water
- Heat
- Parking



Building / Community Profile

Name of Corporation

Haldimand Norfolk Housing Corporation

Address

39 Nichol Street, Waterford

Nichol Terrace**Number of Units 55**

26 (1 b/r) RGI apartments

Community Type

Seniors and Adults (16+)

- No market units
- No modified units

Site Features

- Limited Tenant parking
- Coin operated laundry facilities
- Patio/Balcony
- Security entrance
- Includes fridge and stove
- Cable TV (not included in rent)

Community Features Nearby

- Doctor
- Dentist
- Shopping
- Library
- Church
- Restaurants
- Recreational facilities

Features Included in Rent

- Hydro/water
- Heat
- Parking
- Hot water heater



Additional Unit Pictures

Kent Park / Maranatha Gardens – Apartment Unit



St. Paul's Court – Apartment Unit



Lynnview Terrace – Apartment Unit



For more information on RGI assistance, applications, eligibility or general social housing questions visit www.hnhousing.org or contact a Housing Resource Coordinator at housing@hnhss.ca, or 519-426-6170, 905-318-6623 ext. 3234 or 3235